



140 Kingsmead Park

Allhallows ME3 9TA

Offers Around £85,000



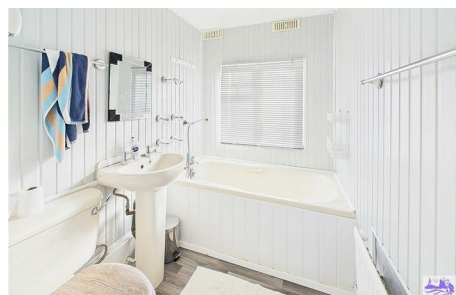
Nestled in the tranquil setting of Kingsmead Park, Allhallows, Rochester, this charming park home presents a unique opportunity for those seeking a peaceful retreat. Designed for individuals aged over 50, this property is perfect for those looking to downsize or enjoy a quieter lifestyle in a semi-rural environment.

The home features one well-proportioned bedroom, complemented by a small office or store room, ideal for those who require a dedicated space for work or hobbies. The inviting lounge area provides a comfortable setting for relaxation, while the kitchen offers the potential for personalisation and modernisation.

This property is in need of complete refurbishment, allowing you to create a home that reflects your personal style and preferences. With the added benefit of being chain-free, the process of acquiring this property can be straightforward and hassle-free.

The location of Kingsmead Park offers a serene atmosphere, surrounded by nature, yet remains conveniently close to local amenities. This park home is EPC exempt, making it an appealing choice for those looking to invest in a property with potential.

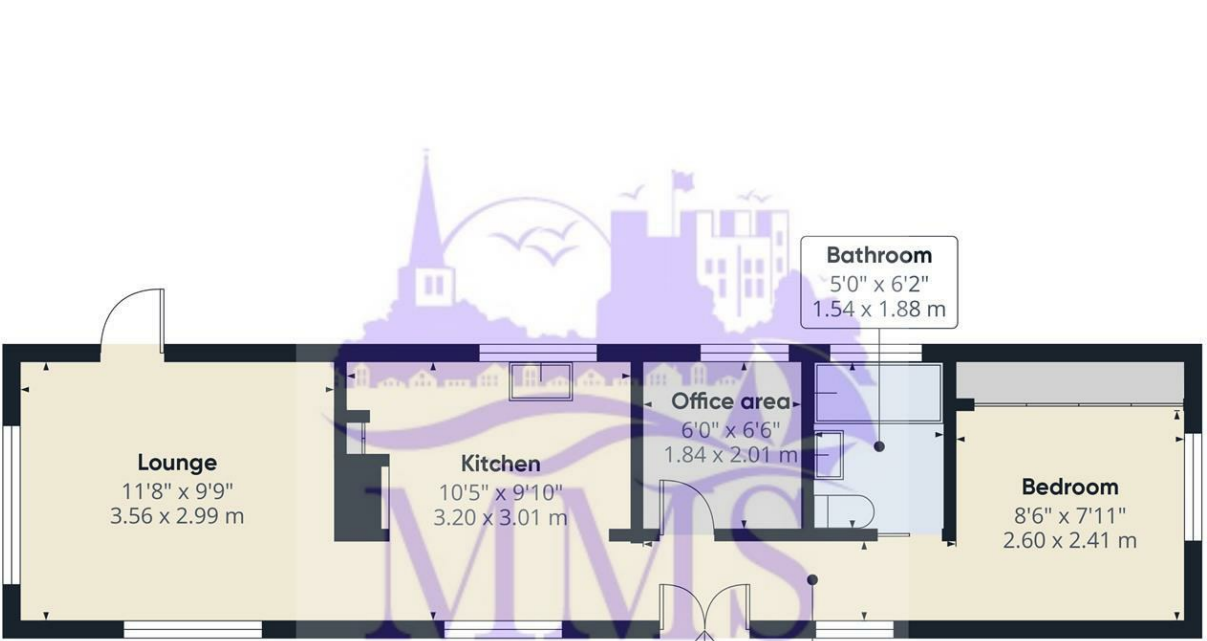
In summary, this park home is a blank canvas awaiting your creative touch, set in a lovely semi-rural location. If you are ready to embrace a new chapter in a peaceful community, this property could be the perfect fit for you. Tenure: Park Homes are neither Leasehold nor Freehold but makes the ideal home.




Area Map



Floor Plans





Approximate total area⁽¹⁾
403.75 ft²
37.51 m²

Hallway
11'2" x 3'3"
3.42 x 1.00 m

Office area
6'0" x 6'6"
1.84 x 2.01 m

Bathroom
5'0" x 6'2"
1.54 x 1.88 m

Bedroom
8'6" x 7'11"
2.60 x 2.41 m

Kitchen
10'5" x 9'10"
3.20 x 3.01 m

Lounge
11'8" x 9'9"
3.56 x 2.99 m

Let our family look after yours

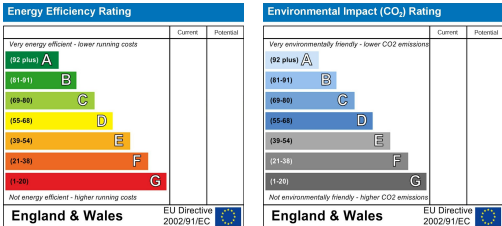
(1) Excluding balconies and terraces

While every attempt has been made to ensure accuracy, all measurements are approximate, not to scale. This floor plan is for illustrative purposes only.

Calculations were based on RICS IPMS 3C standard. Please note that calculations were adjusted by a third party and therefore may not comply with RICS IPMS 3C.

GIRAFFE360

Energy Efficiency Graph



These particulars, whilst believed to be accurate are set out as a general outline only for guidance and do not constitute any part of an offer or contract. Intending purchasers should not rely on them as statements of representation of fact, but must satisfy themselves by inspection or otherwise as to their accuracy. No person in this firm's employment has the authority to make or give any representation or warranty in respect of the property.